



155. PAINTING, JOHN THOMAS PEELE (ENGLISH 1822-1897) “Family Introductions”, oil on canvas, signed lower left J.T. Peele, 1847. Peele, born in Peterborough England, opened a studio in New York City where he painted portraits and specialized in child genre; Active in the Society of British Artists. 34 in. x 27 in.



156. ENGLISH HONDURAS MAHOGANY WINE TASTING OR HUNT TABLE, 19th Century, 1 inch thick Honduras mahogany tops are supported on three vase shaped standards ending in tripod pad feet. Height 28 ½ in. Outside circumference 162 ½ in. Interior 74 in.

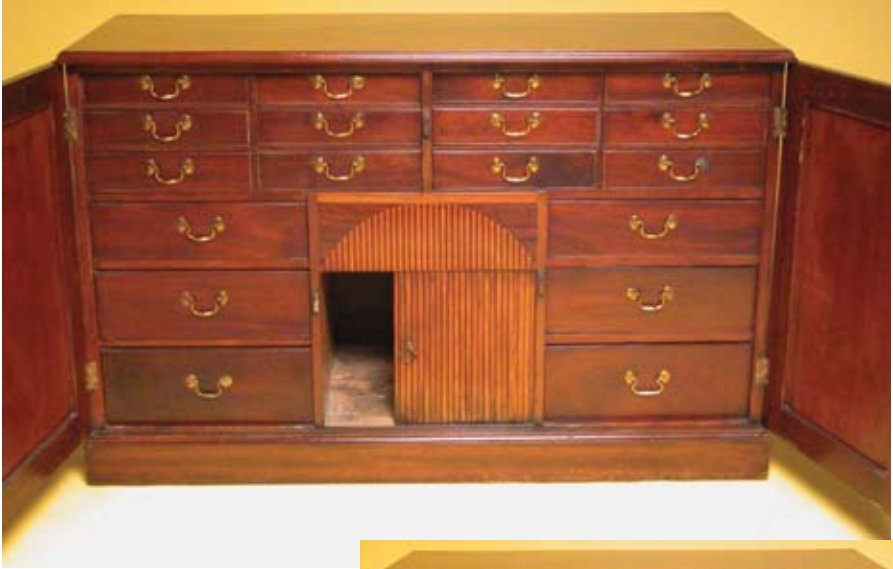


157. FINE WHALE IVORY, EBONY, ABALONE AND FRUITWOOD INLAID WALKING STICK, circa 1850, the polyhedron knob inlaid with stars, dots and panels, the mid-shaft inlaid with abalone and ivory diamonds, leading to a smooth whalebone shaft.

158. WHALE IVORY CARVED KNOB WALKING STICK, circa 1850, the knob with red scribe lines, on hardwood shaft inlaid with abalone, and ivory collar.



159. SCARCE AND UNIQUE MECHANICAL BRASS, COPPER, AND SILVER MARINER'S PRESENTATION CLOCK-BAROMETER, circa 1890, spring driven movement rotates the upper dome section housing two clocks, aneroid barometer, and Reaumur Fahrenheit thermometer and a compass, supported on a capstone embellished with chains, anchor, davit, block, life preserver, and rope. Height 20 in. Base Diameter 9 in.



160. WILLIAM IV MAHOGANY COLLECTOR'S CABINET, circa 1835, with cedar lined drawers and tambour center compartment. Ex-collection: Henry Nannen. Height 33 ¾ in. Width 53 in. Depth 20 ½ in.



161. PAIR OF PENNSYLVANIA BRASS ANDIRONS, circa 1830. Height 22 ½ in.

162. PIERCED BRASS FIREPLACE FENDER WITH TOOLS, circa 1830. Width 48 in.



163. SET OF SIX NEW ENGLAND MAHOGANY HEPPLEWHITE DINING CHAIRS, 19th Century.



164. PAIR OF GILDED AND DECORATED OLD PARIS URNS, circa 1830-40. Height 15 ½ in.



165. CARVED WHITE MARBLE BUST. Height 17 ¼ in.

166. ART NOUVEAU CARVED SCULPTOR'S PEDESTAL, triangular stand with shaped swivel platform. Height 43 ½ in.

167. AUGUSTE RODIN (FRENCH 1840-1917) PATINA BRONZE SCULPTURE OF A HAND, Maine No. 25, Inventory No. 463; signed A. Rodin. The bronze is accompanied by a 1952 certificate of authenticity from Je Soussignee Cecile Goldsieder, Assistante Du Musee Rodin; The bronze was cast in December 1949 by the Rudier Foundry; This information corresponds with the current records of the Musee Rodin. Height 2 ¾ in.





168. LUNDBERG STUDIOS ART GLASS VASE, DAVENPORT, CALIFORNIA, green feather fading to pink vase with yellow iridescent flared mouth, signed Lundberg Studio on bottom. Height 12 ½ in.

169. LUNDBERG STUDIOS ART GLASS VASE, DAVENPORT, CALIFORNIA, reeded blue iridescent vase with gold flared mouth interior, initialed L.S. and dated March 9, 95 on base. Height 8 in.

170. LUNDBERG STUDIOS ART GLASS VASE, DAVENPORT, CALIFORNIA, gold iridescent pedestal bud vase, signed and dated on base, Lundberg Studios, 1994. Height 14 ½ in.

171. LUNDBERG STUDIOS ART GLASS VASE, DAVENPORT, CALIFORNIA, green to iridescent cylindrical vase, signed on base. Height 10 ¼ in.

172. LUNDBERG STUDIOS ART GLASS VASE, DAVENPORT, CALIFORNIA, green iridescent ruffled mouth trumpet vase. Height 13 in.

173. LUNDBERG STUDIOS ART GLASS VASE, DAVENPORT CALIFORNIA, reeded blue iridescent baluster form vase, initialed on base "L.S." Height 10 ½ in.

174. LUNDBERG STUDIOS ART GLASS VASE, DAVENPORT CALIFORNIA, gold iridescent pedestal trumpet vase with ball spacer, signed and dated on the base "Lundberg Studios, 1989". Height 13 in.



175. PAINTING, FRANS DE BEUL (BELGIAN 1849-1919) “Brother and Sister Fishing at Pond with Dog”, oil on wood panel, signed lower right Fr de Beul. 15 ½ in. x 19 ¾ in.



176. CHINESE EXPORT PORCELAIN PUNCH BOWL, 18th Century, decorated with landscape and horseback riding hunters, the inner with elephant decoration. Height 5 in. Diameter 11 ½ in.

177. REGENCY MAHOGANY DRUM TABLE, 1st quarter of the 19th Century, tooled red leather inserted top with four drawer frieze. Height 29 ¾ in. Diameter 39 ¼ in.



178. PAINTING, HUGO R.P. NEWMAN “*Nantucket Doorway*”, oil on canvas, signed upper right. 15 ½ in. x 19 ½ in.



179. STEPHEN GIBBS TWO EGG NANTUCKET BASKET, circa 1950's, signed upon the base “S. Gibbs Maker, Nantucket, Mass.” Height 2 ¾ in. Diameter 3 ½ in. **Provenance:** Coffin Family Collection.

180. NANTUCKET ONE-EGG BASKET, made by Dr. Wescott. Height 2 ¼ in. Diameter 2 in. **Provenance:** Coffin Family Collection.

181. ROUND OPEN SWING HANDLE NANTUCKET BASKET, 19th Century, with carved wooden ears. Height 4 1/8 in. Diameter 6 ¼ in. **Provenance:** Coffin Family Collection.



182. PAINTING, GEORGE McCORD (NEW YORK 1848-1909) “The Old Mill”, oil on canvas, depicting a young girl wearing a red hat coming down from the mill with her dog, signed lower right, G.H. McCord ANA, in period gilt frame. 17 ½ in. x 13 ½ in.